

DATA SHEET

Release 1.3

The Smart Light Engine consists of a module with 36 High Power Z5x LEDs from Seoul Semiconductor. It's been engineered to provide customers with the flexibility to select the optimal light source for the applications. Customers can choose the module light source by selecting the Z5x LEDs from Seoul Semiconductor and the FLT/FMT/F360 optics families from Fraen Corporation to best suit their needs. Each 36 LEDs module can be divided in different shapes (Linear, Square, Rectangular) properly cutting the SMT jumpers to better fit the application.

FEATURES & BENEFITS

- High-Reliability LED Sources
- Rugged Construction
- Wide Operating Temperature Range
- Configurable single, linear and square module
- Flexible Optic Options
- Multiple White CCT's Available
- Colors version Available
- Short Lead Time



TYPICAL APPLICATIONS

- Under Cabinet Lighting
- Architectural Lighting
- Accent Lighting
- Display Case Lighting
- Display Lighting
- Street & Area Lighting



VIDEO TUTORIAL

[How to cut the SMT jumpers](#)



MECHANICAL CHARACTERISTICS

PARAMETER	CONDITIONS
PCB	IMS - thickness 1.6 mm
Finish	White
Size	36LEDs module 86.4 x 86.4 mm 1LED module 14.41 x 14.41 mm
Source Type	Seoul Z5x
Optics Type	Fraen FLT - FMT - F360
Thermal Resistance (p-n junction to bottom of PCB)	RTh = 6 °K/W

ELECTRICAL CHARACTERISTICS

PARAMETER (1 LED module)	MIN	TYP	MAX
*Forward Voltage (V) @350mA & Tj=85 °C	2.60	2.71	2.82
Power Consumption @350mA (W)	0.91	0.95	0.99

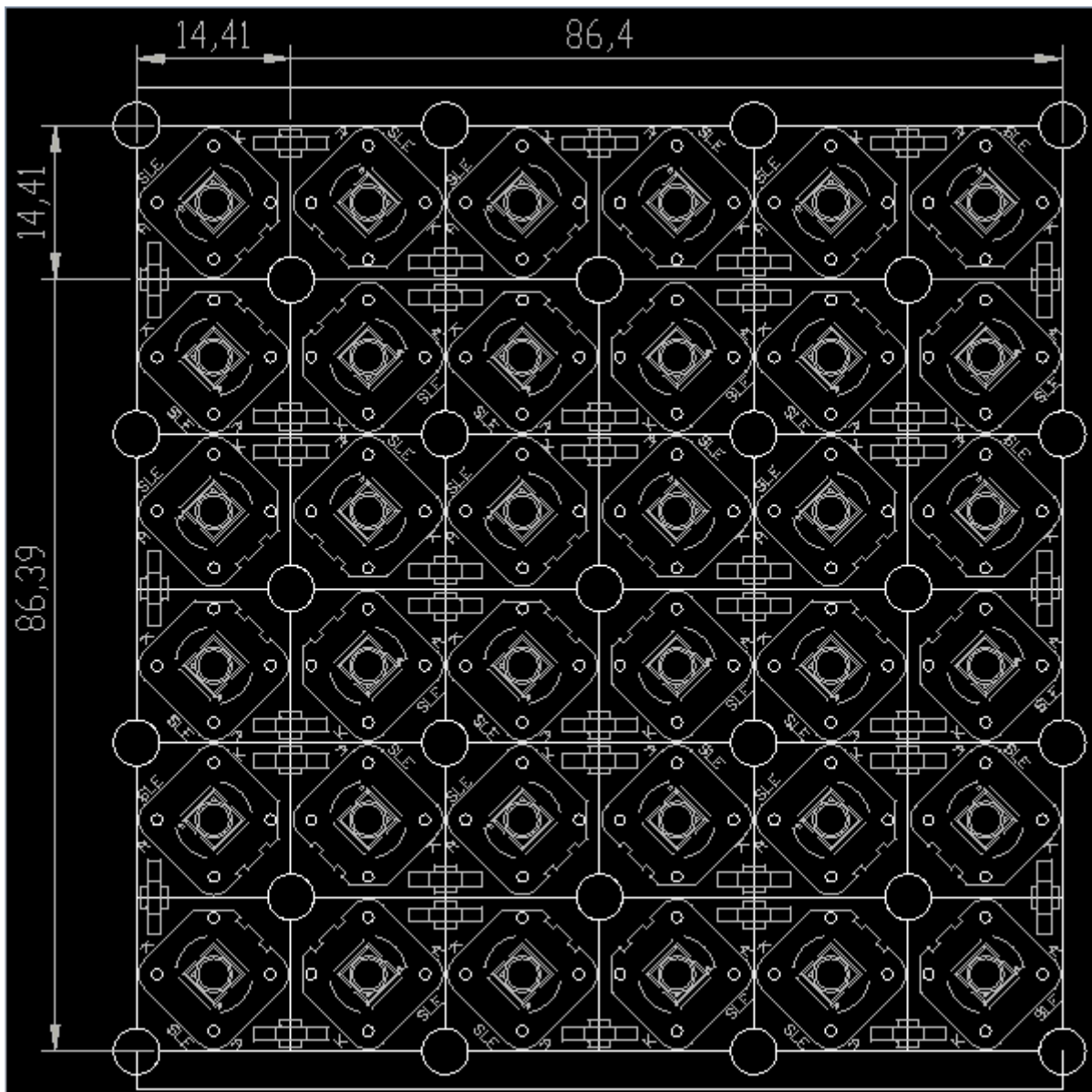
* referred to Z5M white specifications

ENVIRONMENTAL CHARACTERISTICS

PARAMETER	MIN	MAX
Storage Temperature (°C)	- 40	+ 70
PCB Temperature (°C)	- 20	+ 80

MECHANICAL DRAWING

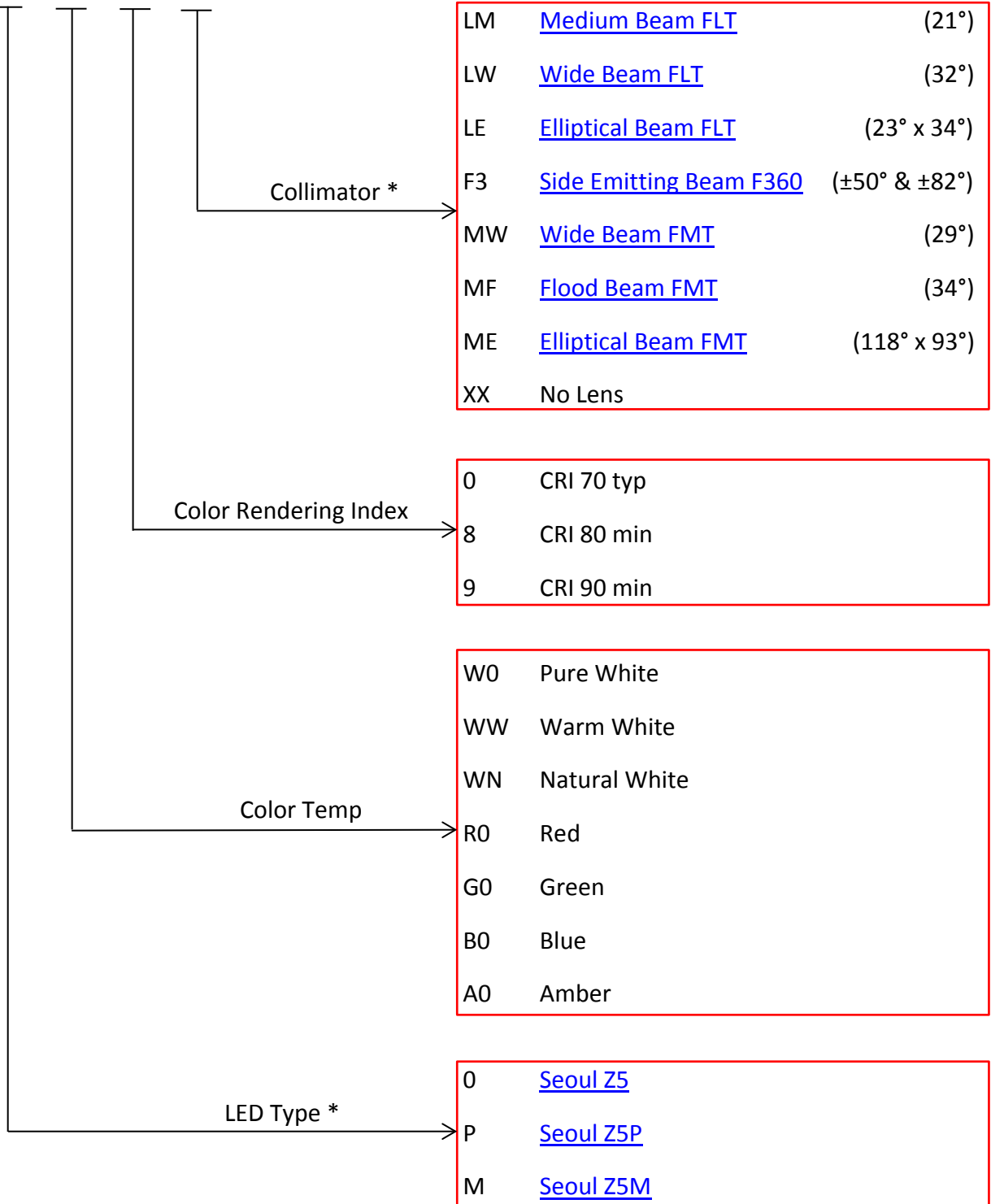
2D drawing: dimensions are in mm.



PART NUMBERING & ORDERING INFORMATION

* According to Fraen Corporation and Seoul Semiconductor datasheet

SLE36-Z5X - XX - X - XX





COMPANY INFORMATION

About Acsel Electronics

The Company was born with a new offer for electronic components particularly addressed to lighting and signaling solutions, supported by a professional structure with an experience of many years in Electronic Distribution and technical promotion.

The most characteristic factor of Acsel Electronics success is the concrete relationship and cooperation established with its own Customers, which is synthetically expressed in supporting them with the optimal technological choices for their applications and keeping well in mind the economic factor of competitiveness and "time to market".

Acsel Electronics activity mainly applies to the electronic Enterprises with all various ownerships that need a support and an efficient service, where Customer success is considered the prime index for Acsel Electronics mission.

CONTACT DETAILS

ACSEL ELECTRONICS SRL

Strada Torino, 43
10043 - Orbassano (TO)
ITALY

Phone +39 011.9040938
Fax +39 011.9040895
e-mail info@acsel.it
web www.acsel.it



Note: All specifications are subject to change without notice.